

THE TRAVERSE

AP
BUILDERS

ELEVATION **A**



ELEVATION **B**



ELEVATION **C**



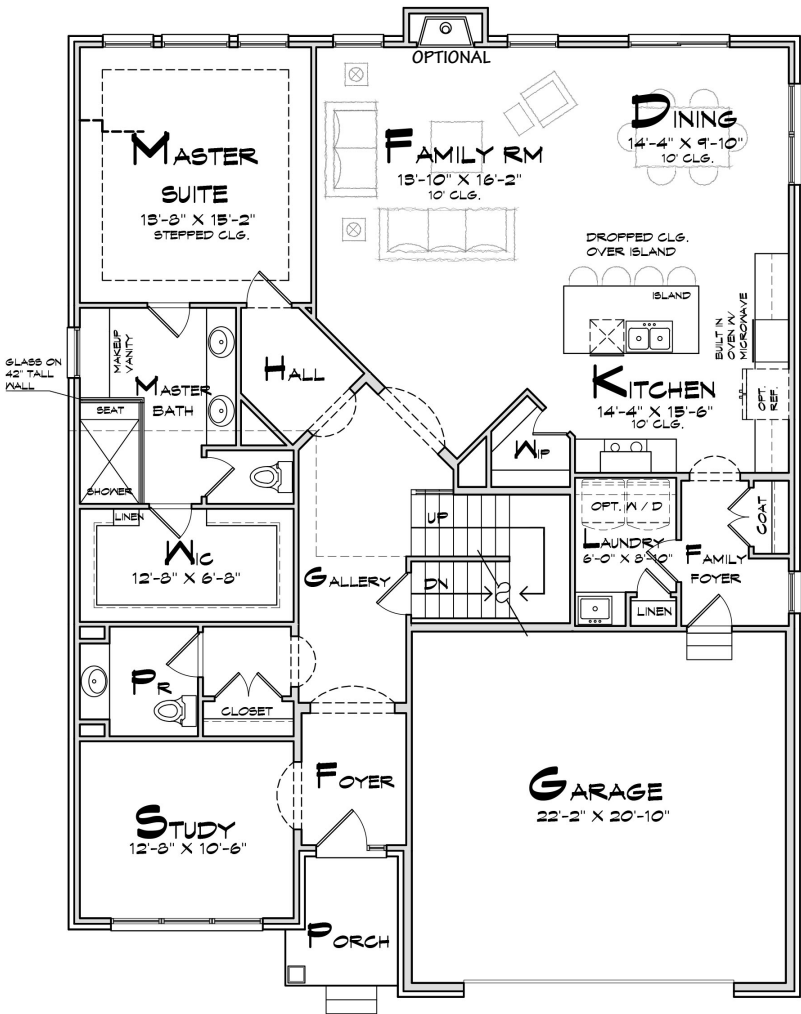
Elevations shown are artistic renderings and may vary; subject to change.

info@apbuilders.com
248.562.7374

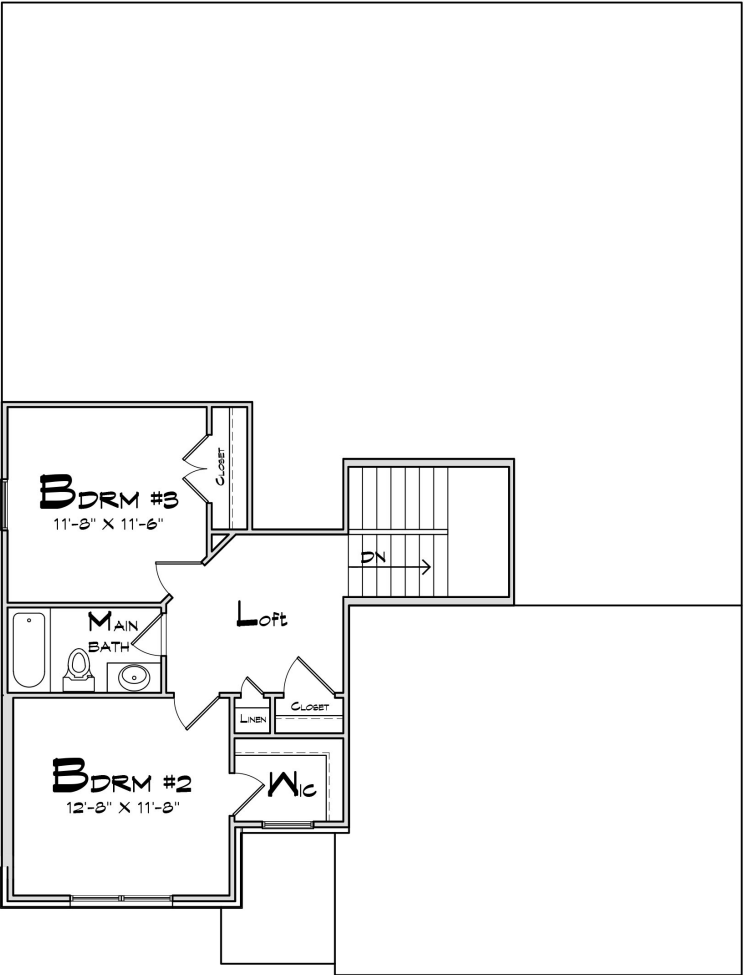


THE TRAVERSE

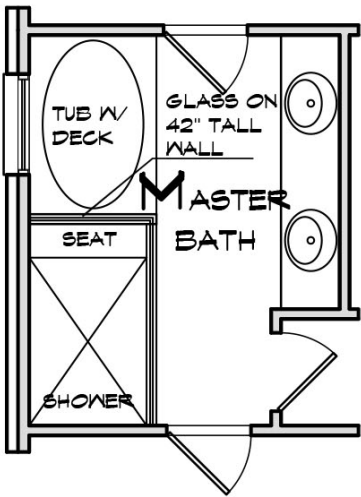
BROOKFIELD VILLAGE



FIRST FLOOR



SECOND FLOOR



OPTIONAL MASTER
BATH W/ TUB

AVAILABLE OPTIONS:

- DELUXE MASTER BATH WITH TUB
- 4TH BEDROOM
- FINISHED LOWER LEVEL
- FAMILY ROOM FIREPLACE

BEDROOMS	3
BATHS	2.5
SQUARE FEET	2,400

We reserve the right to make changes to plans, prices, specifications and materials, or to change or discontinue models without prior notice or obligation. Floor plan shown is Elevation A. Square footage may change without notice. Dimensions above may vary from actual construction drawings. Information subject to change without notice. 3.29.21